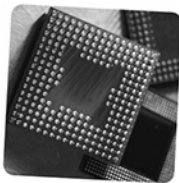


Ascot

The **Ascot** goes beyond what a traditional countertop terminal will do - fitted with a high quality 22" touchscreen it is ideally suited for applications that require security and usability in a compact format. The **Ascot** is designed to accommodate a wide variety of EMV attended and unattended terminals, card readers, 1d & 2d scanners and thermal printers. The design allows for a full size kiosk print roll (6.5" diameter) to minimize out of paper conditions.

The **Ascot** is available in a wide range of colors and signage options so that it can be tailored to suit your branding. The flexible design also allows a choice of processors up to the Intel i7 processor.



22"
Hi-resolution
LCD



Internal
6.5" print roll



Wide variety
of EMV certified
terminals

Touchmate Inc.
7703 North Lamar Boulevard, Suite 100
Austin, TX, 78752
www.touchmateUSA.com

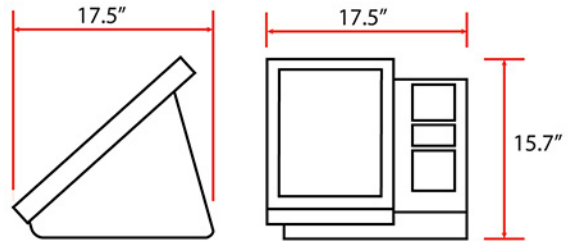
512 949 3330 Phone
866 552 5426 fax

Ascot specifications:

Display: 22-inch LCD LED Backlight 16:9 1920 X 1080 Full HD
Projective capacitive UL60950 Compliant

Computer: Intel i5 Quad-core Processor
4GB standard (up to 16GB) RAM
Windows 7 Pro Embedded or Windows 10
802.11 a/b/g/n Wireless Network standard
8 USB Ports (4 USB 2.0, 4 USB 3.0)

Weight: 38lbs - 17kg



Options:

- **Storage:**
320GB Hard Disk Storage or 64/128GB Solid State Storage
- **Printers:**
Star Micronics TUP500 Thermal Printer with Presenter
Custom VKP80II 80mm printer
- **Credit Card Readers:**
Swipe-style magnetic stripe reader (either non-encoded or encrypted type),
2 or 3-track mode Insert-style magnetic stripe reader is also available
- **Bar Code Reader:**
Datalogic Imaging 1D/2D Bar Code Reader, capable of reading codes from cell phone screens
- **EMV certified terminals:**
As required



United States

Touchmate inc.
7703 North Lamar Boulevard, Suite 100 Austin, TX, 78752
512 949 3330 Phone 866 552 5426 fax
Web: www.touchmateUSA.com
info@touchmateUSA.com

Australia - New Zealand

Touchmate Solutions
4/8 Bult drive, Brendale, Qld, 4500,
07 3889 6031 Phone 07 3889 6028 fax
Web: www.touchmate.com.au
sales@touchmate.com.au